

GETTING START

To Connect to AC Power Supply

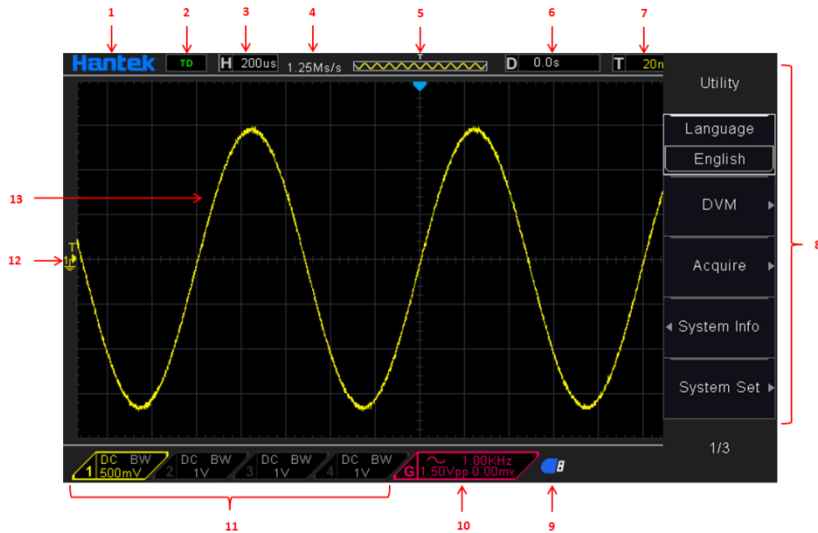
This oscilloscope can accept 100-240 V, 45-440 Hz AC power supply. Please use the power cord supplied with the accessories to connect the oscilloscope to the power source as shown in the figure below.



Power-on

When the oscilloscope is energized, press the power key at the lower-left corner of the front panel to turn on the oscilloscope.

User's Interface



1. Hantek logo
2. Trigger Status
3. Readout shows main time base setting
4. Sample rate
5. Main Time Base Window
6. Trigger time
7. Trigger level, Readout tells trigger level.
8. Operating Menu shows different information for respective function keys.

GETTING START

9. If this icon lights up/active, it means the USB disk has been connected.

10. If this icon lights up/active, it means the wave generator works

11. The information of coupling, Bandwidth and volt/div of CH1~CH4.

12. Channel Marker

13. Window displays waveform.

Install Software

Caution: You must install the software before using the oscilloscope on PC.

1. While in Windows, insert the installation CD into the CD-ROM drive.
2. The installation should start up automatically. Otherwise in Windows Explorer, switch to the CD-ROM drive and run *Setup.exe*. According to the installation information, please install it step by step.

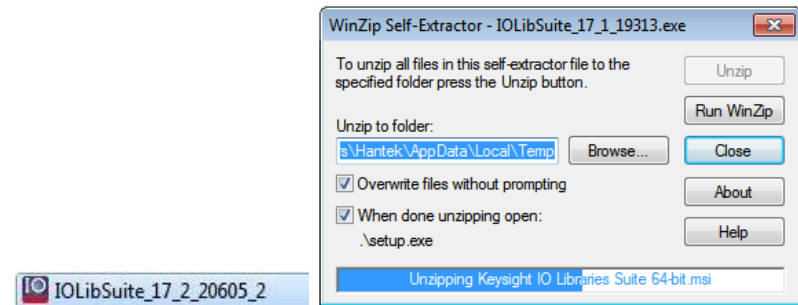
Download and install IO libraries suite.

Please download latest IO Libraries Suite from the website:

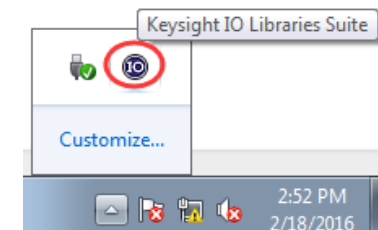
<http://www.keysight.com/main/software.jsp?key=2175637&lc=chi&cc=CN&nid=-11143.0.00&id=2175637>

Also you can install the software named IOLibSuite in the CD.

Double click IO Libraries Suite program and install it. According to the installation information, please install it step by step. The installation maybe takes several minutes.



After installation, you can see it in bottom right corner.

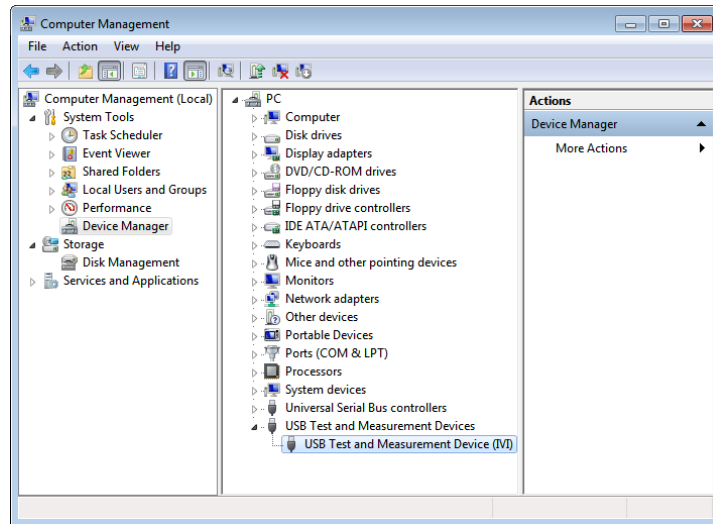


USB CONNECTION

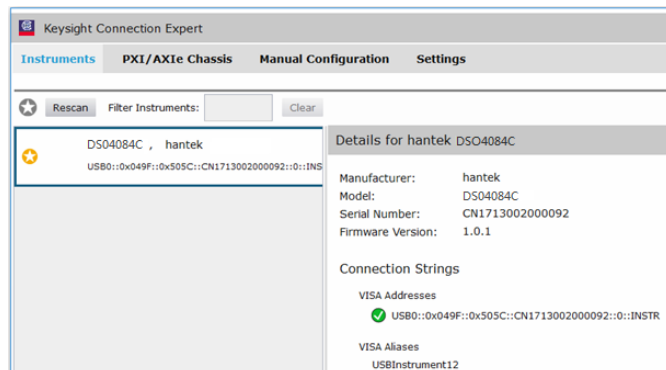
1. Power on. Connect DSO scope to PC via USB cable. The driver will install by itself. When the driver is installed successfully, there will have a prompt as follows:



2. After installing successfully, users can see driver information in device manager.



3. Click Keysight IO libraries suite icon in bottom right corner, and choice "Connection Expert". Now users can see the device information.

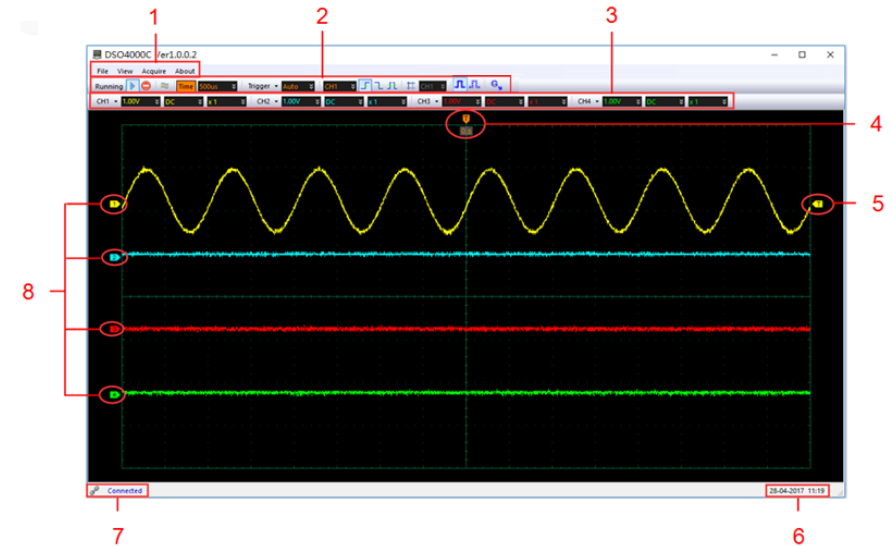


4. If installing unsuccessfully, right click to update the driver manually, and choice the correct route: C:\Program Files\IVI Foundation\VISA\IVI USB Staging\b841aa80\Windows
5. Double click "DSO-xxxx" shortcut on desktop to open the software of DSO device. The device is connected with PC successfully. You can see "Connected" tip in status column.

USB CONNECTION

User's Interface of PC

Click the software icon on the desk after you finished the software setting and equipment connecting. Then a user interface will be showed as follows:

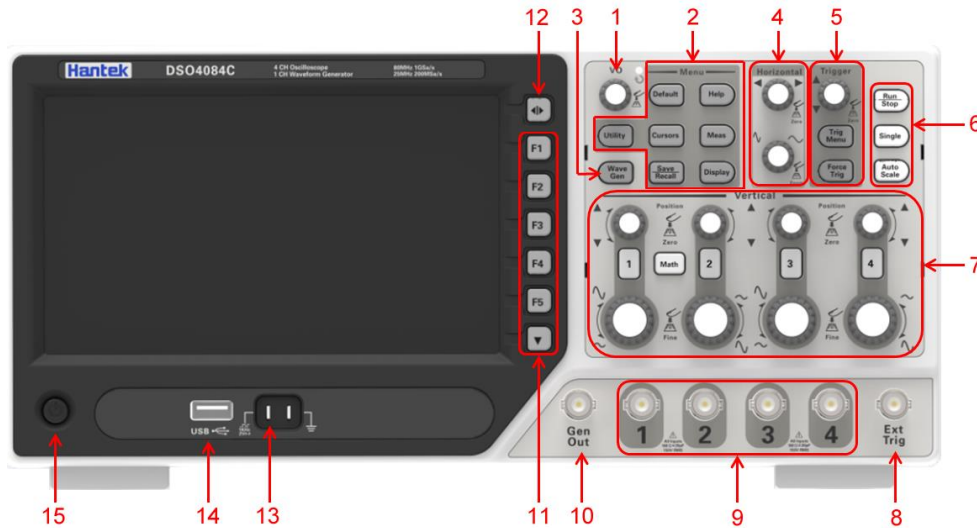


In addition to displaying waveforms, the display area is filled with many details about the waveform and the oscilloscope control settings.

1. The Main Menu
2. The Toolbar
3. Control Panel
4. The Horizontal Trigger Position
Drag Horizontal Position icon on screen to adjust the trigger position against screen. Double click the icon to reset the trigger point back to the screen center.
5. The Trigger Level
Drag the trigger level icon on screen to adjust the trigger level position against screen.
6. It shows the system time.
7. Connect Status
8. The markers show the CH1/CH2/CH3/CH4 reference points of the displayed waveforms. If there is no marker, the channel is not displayed.

FRONT PANEL

The content below simply describes and introduces the front panel and the back part of this series of digital oscilloscope so that you can get familiar with this series of digital oscilloscope well within the shortest time.



1. Universal Knob
2. Function Button
3. Waveform Generator
4. Horizontal System
5. Trigger System
6. Fast Action Button(Run/Stop, Single, Auto Scale)
7. Vertical System
8. External Trigger Input Channel
9. CH1-CH4 Input Channel for signal
10. Waveform Generator Output
11. Function Softkeys
12. Menu Button
13. Probe Compensation terminal
14. USB Port
15. Power Button

GENERAL SAFETY SUMMARY

Only qualified personnel should perform maintenance.

Avoid fire or personal injury.

Use suitable power cord. Use only the power cord specified for this product and certified for the country of use.

Ground the product. This product is grounded through the grounding conductor of the power cord. To avoid electric shock, the grounding conductor must be connected to earth ground. Before making connections to the input or output terminals of the product, ensure that the product is properly grounded.

Connect the probe in a right way. The probe ground lead is at ground potential. Do not connect the ground lead to an elevated voltage.

Check all terminal ratings. To avoid fire or shock hazard, check all ratings and markings on the product. Refer to the product manual for detailed information about ratings before making connections to the product.

Do not operate without covers. Do not operate this product with covers or panels removed.

Avoid exposed circuitry. Do not touch exposed connections and components when power is present.

Do not operate with suspected failures. If you suspect there is damage to this product, have it inspected by qualified service personnel.

Assure good ventilation.

Do not operate in wet/damp environments.

Do not operate in an explosive atmosphere.

Keep product surfaces clean and dry.

General Inspection

Please check the instrument as following steps after receiving an oscilloscope:

Check the shipping container for damage:

Keep the damaged shipping container or cushioning material until the contents of the shipment have been checked for completeness and the instrument has been checked mechanically and electrically.

Check the accessories:

Accessories supplied with the instrument are listed in "Accessories" in manual. If the contents are incomplete or damaged, please notify the franchiser.

Check the instrument:

In case there is any mechanical damage or defect, or the instrument does not operate properly or fails performance tests, please notify the franchiser.